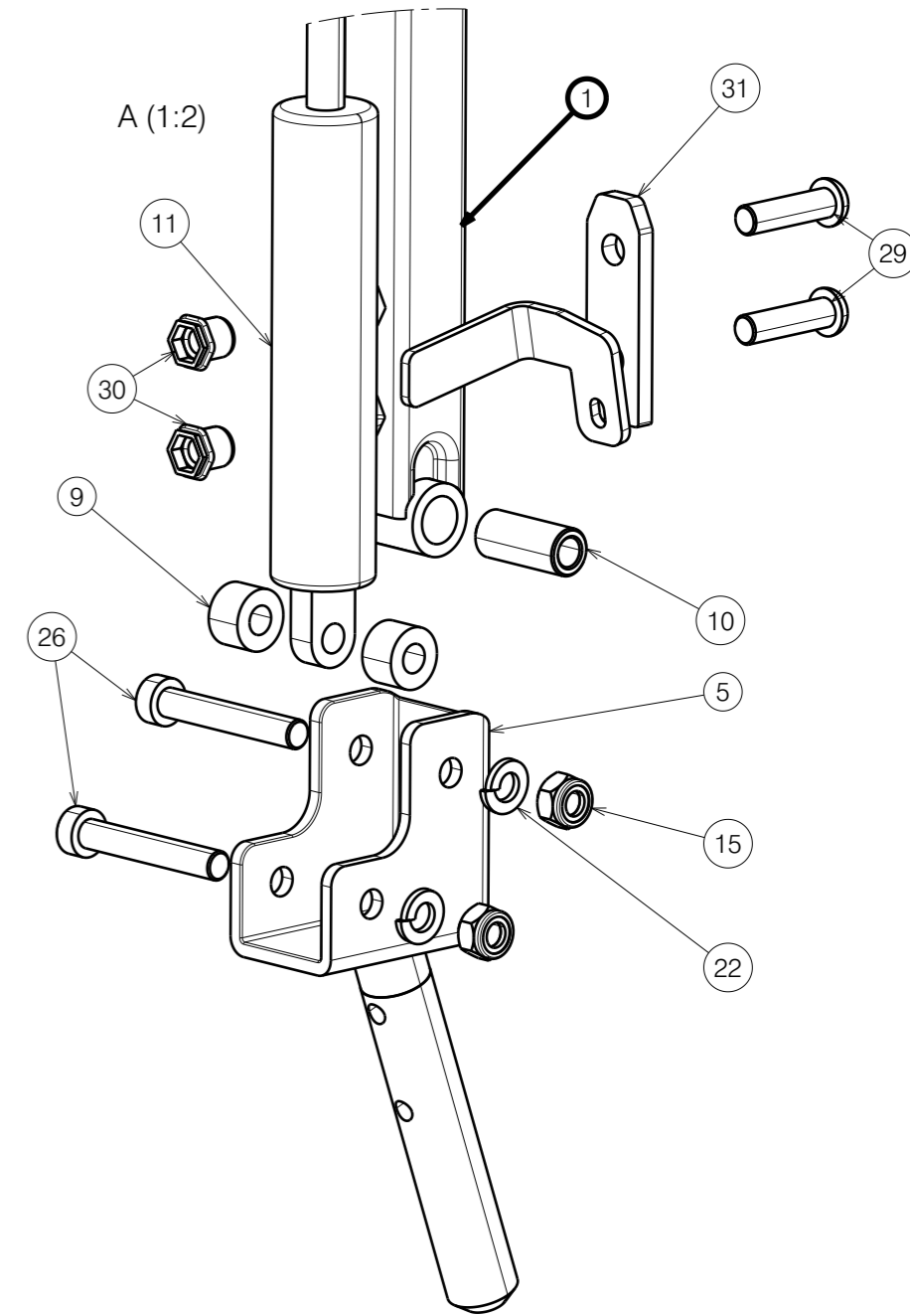
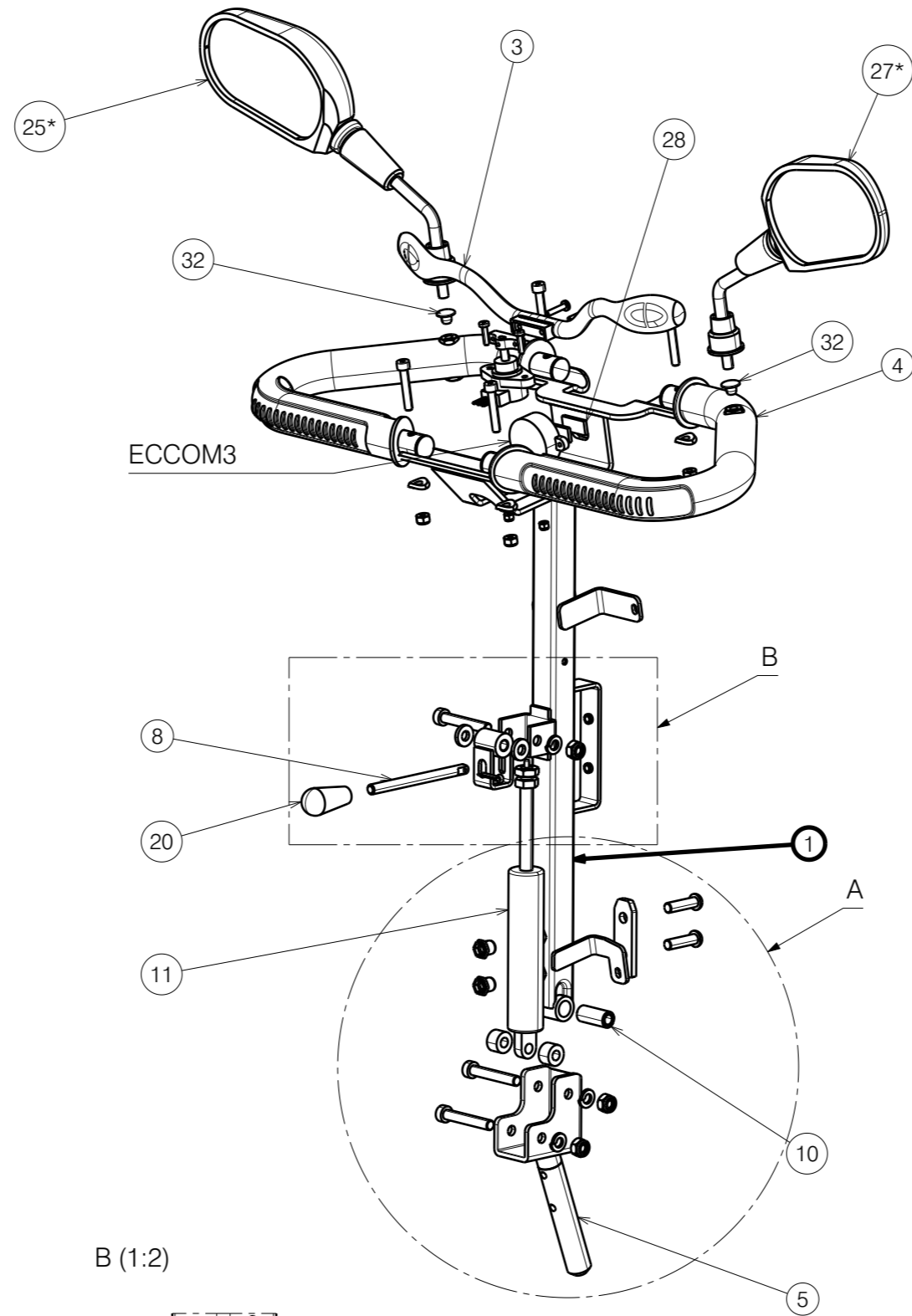
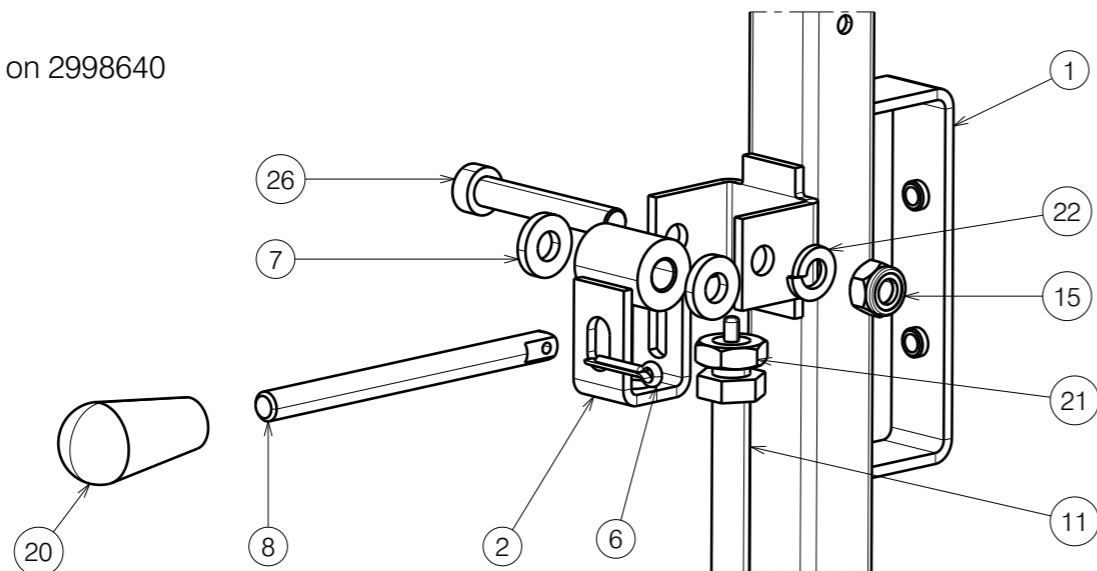


No.	Plan	Article	Qty
1	P00081428	2695704	1
2	YC00632	1C23100	1
3	XC00399	3991685	1
4	XC00336	3990648	2
5	XC00484	1C58099	1
6	XC00195	3990727	1
7	Plastic washer	3990726	2
8	XC00192	3990724	1
9	Plastic washer	3990725	2
10	XC00677	1C21200	1
11	3990633	3990633	1
12	ECCOM3	3992019	1
13	Screw M6x35	1001496	4
14	Nut M6	2994063	4
15	Nut M8	3991743	3
16	Screw M4x20	1991859	2
17	Nut M4	1001678	2
18	Screw M4x16	2990185	2
19	ECCOM2	3992014	1
20	1001143	1001143	1
21	Nut M10x1	1903170	1
22	Spring washer M8	1001570	3
23	Screw M5x8	3993323	1
24	Ronds washer M6	1911842	4
25*	Left mirror	3990651	1
26	XC00355	3991313	3
27*	Right mirror	3990652	1
28	3M Dual lock	2998521	2
29	1992717 M8x30	1992717	2
30	2998739	2998739	2
31	P00117054	2919204	1
32	P00117933	2992548	2

\* Option (do not use 32 if 25 and 27 were chosen).

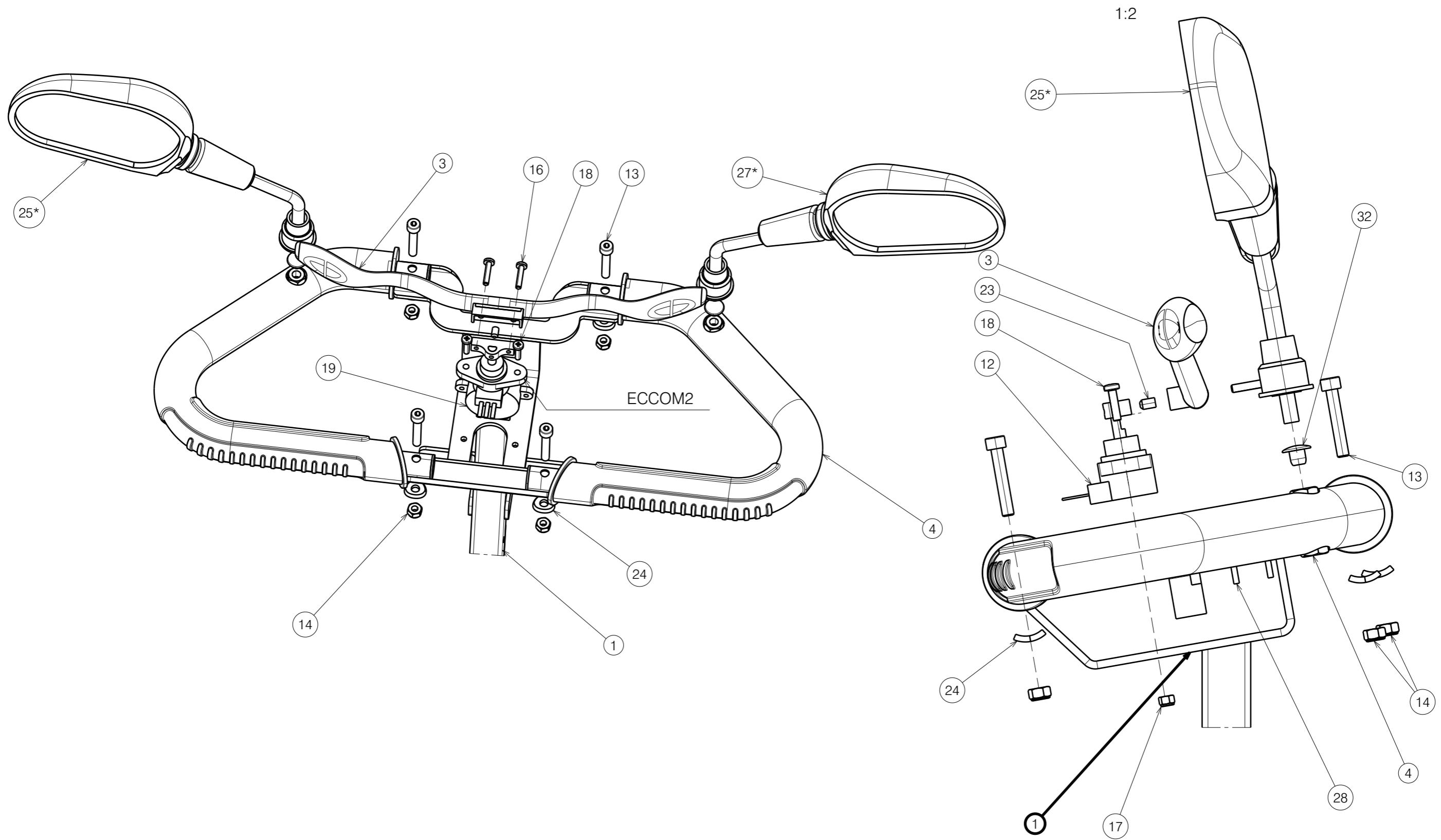
Electrical components presented on 2998640



- Before stick 3M Dual Lock prepare surface on plastic part:
1. Roughen the surface by abrasive pad
  2. Clean surface with Isopropyl Alcohol (IPA), propan-2-OL.
  3. Press 3M Dual Lock after stick

NOTICE: THE INFORMATION CONTAINED ON THIS DRAWING IS PROPRIETARY TO VERMEIREN GROUP AND SHALL NOT BE DISCLOSED IN WHOLE OR IN PART, OR USED FOR ANY DESIGN OR MANUFACTURE, EXCEPT WHEN SUCH USER POSSESSES DIRECT WRITTEN AUTHORISATION FROM VERMEIREN GROUP.				Sheet 1/2	---
SV KUARZ HEAD FRAME SUB ASSY				Plan No.	E00075951/C.1
Scale:	1:5	Drafted	Verified	Confirmed	
Date	10/12/2024	25/02/2026	25/02/2026		
Initials	BK	PM	MK		





NOTICE: THE INFORMATION CONTAINED ON THIS DRAWING IS PROPRIETARY TO VERMEIREN GROUP AND SHALL NOT BE DISCLOSED IN WHOLE OR IN PART, OR USED FOR ANY DESIGN OR MANUFACTURE, EXCEPT WHEN SUCH USER POSSESSES DIRECT WRITTEN AUTHORIZATION FROM VERMEIREN GROUP.

Sheet 2/2

---

SV KUARZ HEAD FRAME SUB ASSY

Plan No.  
E00075951/C.1

Scale:	1:5	Drafted	Verified	Confirmed
Date	10/12/2024	25/02/2026	25/02/2026	
Initials	BK	PM	MK	

