

No.	Plan	Article	Qty
1	YC01478	1C47304	1
2	A00093392*/ A00093393	1921941*/ 1921945	1
3	A00093396/ A00093395**	1921940**/ 1921944	1
4	E00082508	-	1
5	E00082509	-	1
7A	Brake	3990643	1
7B	P00116147	GP32800	1
8	YC00613	1C22204	2
9	Screw M6x30 DIN912	1001495	1
10	Screw M10x30	1001502	4
11	Washer M6	1001564	1
12	Spring Washer M10 DIN127B	1001566	4
13	Nut M6	1001680	7
14	Nut M10	1001683	4
15	Screw M6x20	1006999	2
16	Cap Nut M3	2990306	2
17	Screw M6X8	3990062	5
18	Screw M3X8	3990797	4
20	Magnet	3990722	1
21	XC00190	3990617	1
22	XC00274	3990732	4
23	XC00296	3990672	1
24	XC00318	3991129	2
25	P00100883	2904200	1
26	Screw M5x16	2994067	6
27	Screw M5x30 BLACK	1903983	2

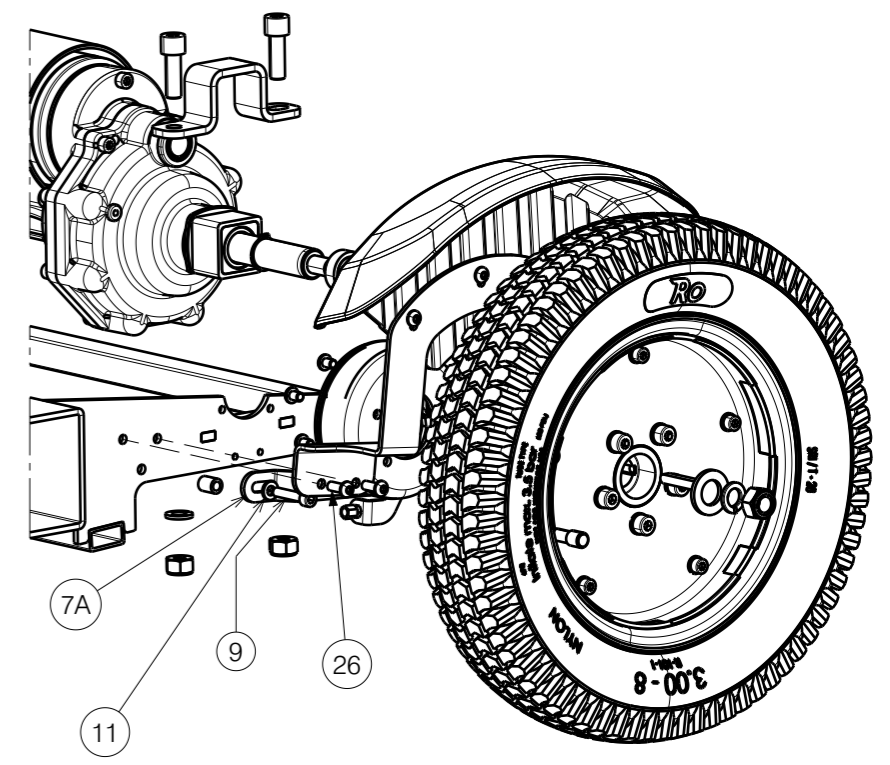
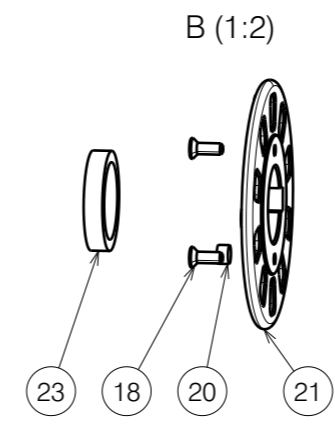
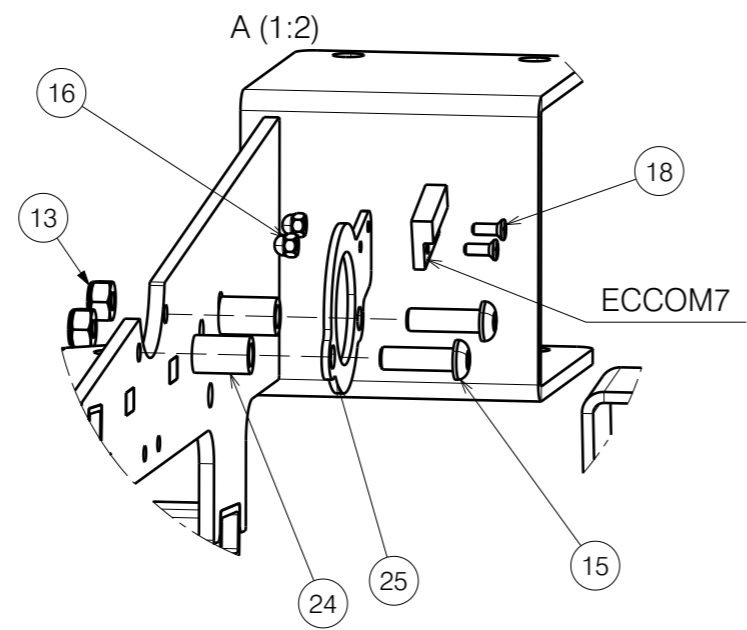
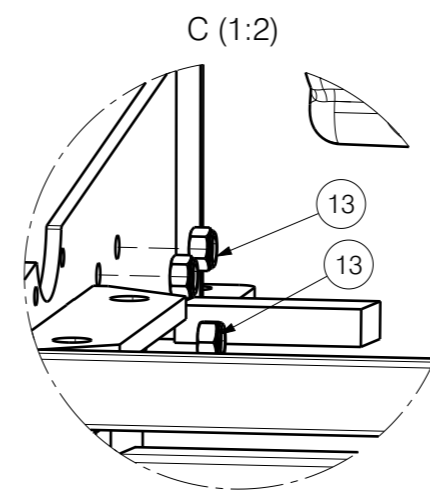
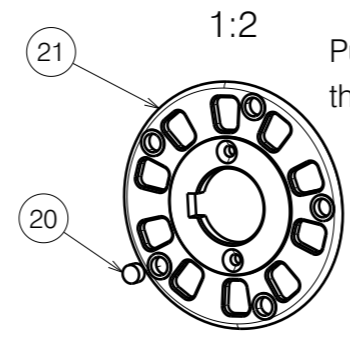
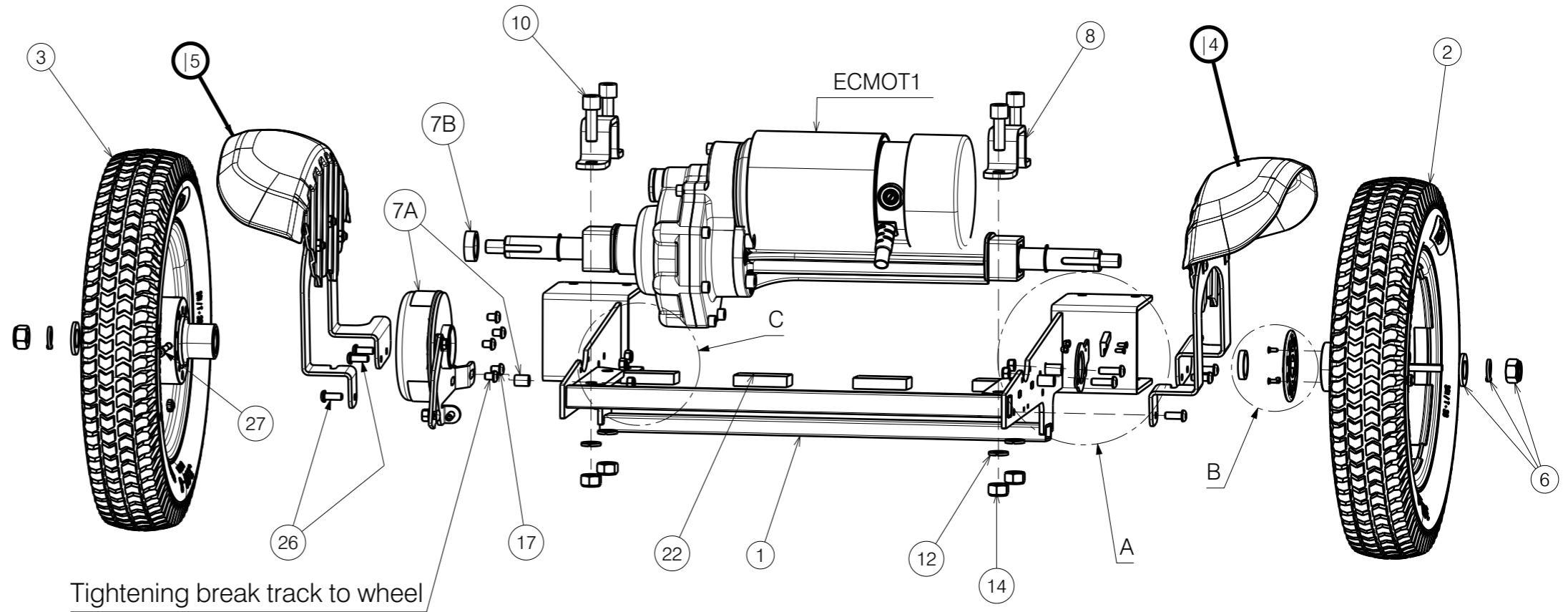
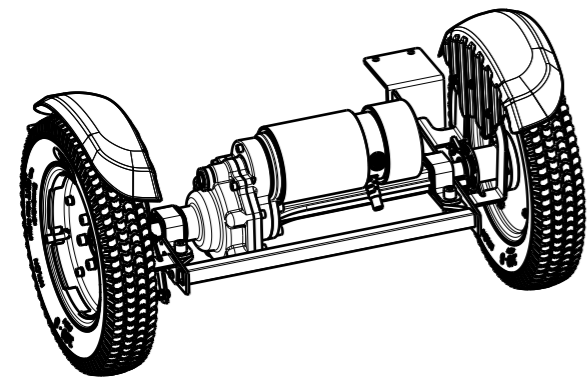
Electrical components presented on 2998640

Optional Equipment:

* - Rear Block Profile Tire Left

** - Rear Block Profile Tire Right

*** - 7B Brake



NOTICE: THE INFORMATION CONTAINED ON THIS DRAWING IS PROPRIETARY TO VERMEIREN GROUP AND SHALL NOT BE DISCLOSED IN WHOLE OR IN PART, OR USED FOR ANY DESIGN OR MANUFACTURE, EXCEPT WHEN SUCH USER POSSESSES DIRECT WRITTEN AUTHORIZATION FROM VERMEIREN GROUP.				---
SV KUARZ REAR WHELL				Plan No. E00075733/C.1
Scale:	1:5	Drafted	Verified	Confirmed
Date	04/12/2024	24/02/2026	24/02/2026	
Initials	BK	PM	MK	

